

SPECIFICATION SHEET

SMALL OVAL FIREBOWL with DOUBLE SIDED ENCLOSURE

Index # 60, Rev-1

Page 1 of 2

MATERIAL OPTIONS:

FIRE BOWL MATERIALS: White Cast Stone, Black Cast Stone, Hand Polished Aluminium or Hand Polished Bronze.

ENCLOSURE: Black Steel, Hand Polished Bronze, Brushed Stainless Steel.

CE APPROVAL:

Currently CE tested, approved and available for the following countries:

NG - I2H - G20 - 20mBar

UK, EIRE, AUSTRIA, DENMARK, SPAIN, FINLAND, ITALY, PORTUGAL, SWEDEN, NORWAY & GREECE

NG - I2E+ - G20/G25 - 20/25mBar

BELGIUM & FRANCE

NG - I2L - G25 - 25mBar

NETHERLANDS

NG - I2E - G20 - 20mBar

GERMANY & LUXEMBOURG

LPG - I3P(37) - G31 - 37mBar

UK, EIRE, SPAIN, PORTUGAL, GREECE, LUXEMBOURG & NETHERLANDS

LPG - I3P(30) - G31 - 30mBar

NETHERLANDS

LPG - I3P(50) - G31 - 50mBar

GERMANY, NETHERLANDS & AUSTRIA

DIMENSIONS:

Overall dimensions of the fire bowl: NG/LPG HEIGHT: 198mm x WIDTH: 490mm x DEPTH: 340mm

Overall dimensions of the surround: NG/LPG HEIGHT: 719mm x WIDTH: 826mm x DEPTH: 2mm

Dimensions of enclosure opening [viewed from front]: NG/LPG HEIGHT: 539mm x WIDTH: 646mm x DEPTH: 769mm

Dimensions of required construction opening : NG/LPG HEIGHT: 850mm x WIDTH: 670mm x DEPTH: 765mm

SMALL OVAL POWER RATING:

High and low flame setting (gas only):

Heat input high: NG - 9.3KW LPG - 8.9KW

Heat input low: NG - 7KW LPG - 6.7KW

OTHER TECHNICAL INFORMATION:

1. Fire available in NG or LPG.
2. This type of "double sided" installation will require special flue requirements and possibly mechanical extraction to operate safely. If the Flue system is not strong enough to ensure the fire operates safely additional glass panels may need to be fitted during installation.
3. For use with chimneys or flues aided by mechanical extraction with an internal free area no less than 248cm² - Class 1 x 3m length. Chimney/flue must be swept and tested by a registered chimney sweep prior to installation. If mechanical extraction is not used, a glass panel must be installed to close off one side.
4. Seek advice from a Flue Specialist as Spirit Fires Ltd will not accept responsibility for the unsuitable installation of this fire.
5. For air brick requirements please see air brick chart below in relation to high input settings.
6. Approximate running costs per hour on low (subject to your gas supplier tariff): NG - 7.8p LPG - 21.9p
7. 7KW Version available upon request
8. Manual Control as Standard, Remote Control versions available upon request. 240v, 3amp fuse spur supply required for the remote.
9. Metal Enclosure comes with Gather Unit as Standard

CVO reserve the right to amend and improve any of the specification sheets without prior notice.

All fires are living flames. Sooting can occur as a natural bi-product of a living flame and cannot be controlled or eliminated. Weathering and sooting of the enclosures is a natural and normal occurrence. This, understandably is more obvious on light coloured materials such as white stone and white powder coated steel.

Cast bronze and cast iron are hand sand cast and polished. Pitting and air holes are normal and a part of the unique quality of such a piece.



AIRBRICK CHART	
Input Energy:	
0-7KW	No Airbrick Required
8-9KW	11cm ² free air
10-15	36cm ² free air
16-18KW	50cm ² free air
KEY	
NG - NATURAL GAS	
SF - SOLID FUEL	
LPG - LIQUID PETROLEUM GAS	
ALL DIMENSIONS WITHIN +/- 2mm	

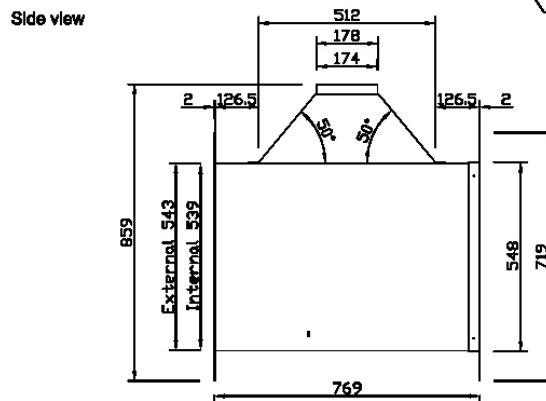
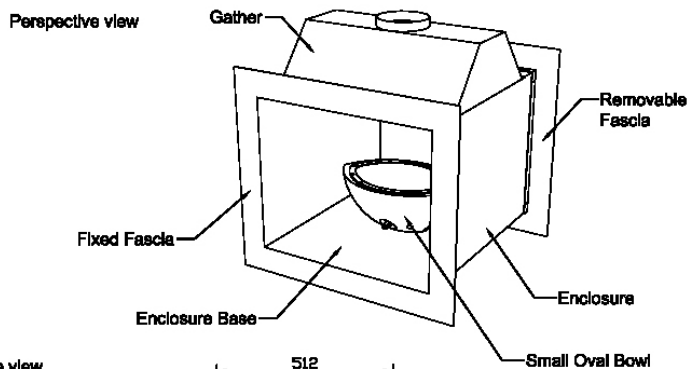
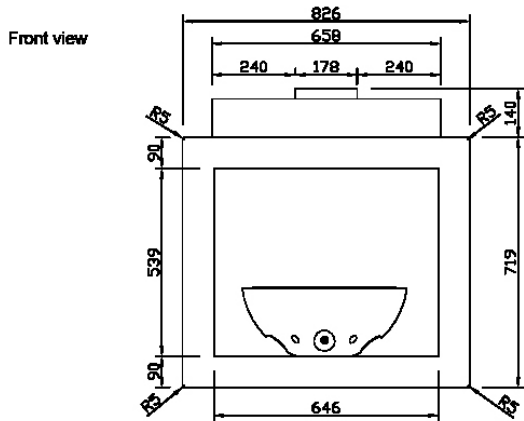
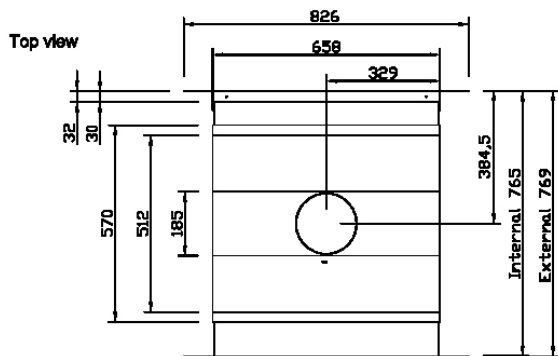
Spirit Fires Ltd, 4 Beaumont Square Durham Way South Aycliffe Industrial Park
 Newton Aycliffe County Durham DL5 6SW
 Tel: +44 (0) 1325 327 221 Fax: +(0)1325 327 292
 Email info@cvo.co.uk

SPECIFICATION SHEET

SMALL OVAL FIREBOWL with DOUBLE SIDED ENCLOSURE

Index # 60, Rev-1

Page 2 of 2



Gathers are optional depending upon installation requirements. If the standard gather is not to be used, the fire must be connected to the inglenook in accordance with CORGI and local regulations. The gather shown is for dimensional purposes only. The gather can be supplied as an optional extra. Please specify when placing your order.

CVO reserve the right to amend and improve any of the specification sheets without prior notice.

All fires are living flames. Sooting can occur as a natural bi-product of a living flame and cannot be controlled or eliminated. Weathering and sooting of the enclosures is a natural and normal occurrence. This, understandably is more obvious on light coloured materials such as white stone and white powder coated steel.

Cast bronze and cast iron are hand sand cast and polished. Pitting and air holes are normal and a part of the unique quality of such a piece.



AIRBRICK CHART	
Input Energy:	
0-7KW	No Airbrick Required
8-9KW	11cm ² free air
10-15	36cm ² free air
16-18KW	50cm ² free air
KEY	
NG	- NATURAL GAS
SF	- SOLID FUEL
LPG	- LIQUID PETROLEUM GAS
ALL DIMENSIONS WITHIN +/- 2mm	

Spirit Fires Ltd, 4 Beaumont Square Durham Way South Aycliffe Industrial Park
 Newton Aycliffe County Durham DL5 6SW
 Tel: +44 (0) 1325 327 221 Fax: +(0)1325 327 292
 Email info@cvo.co.uk